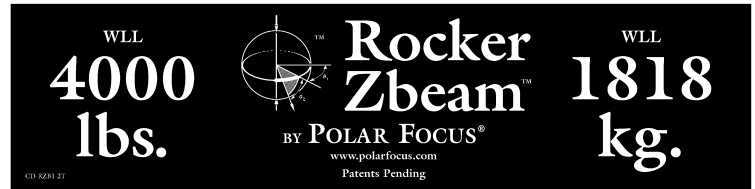


Audio Rigging Products

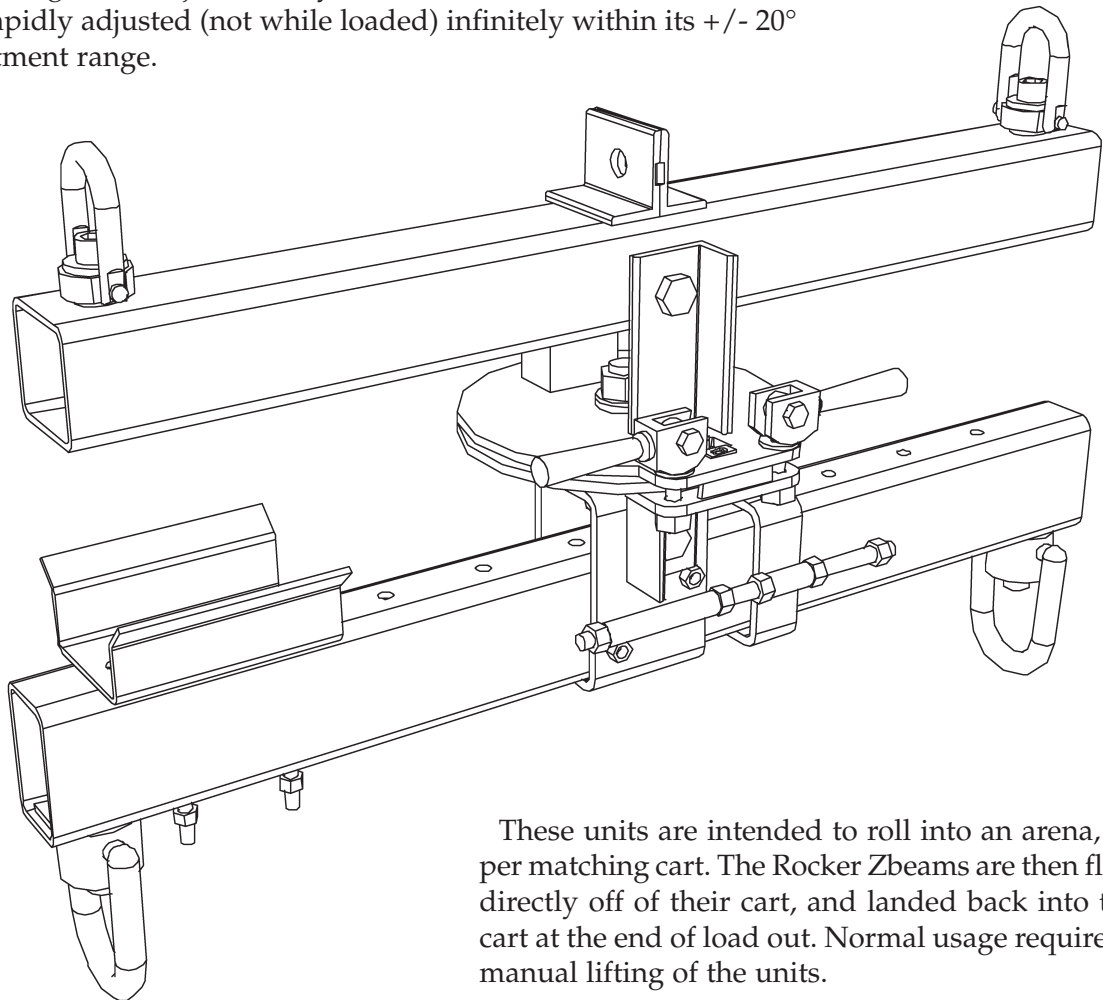


## Rocker Zbeam™ RZB1-2T

This precision rigging tool (three patents pending) is designed to **increase speed and accuracy of line array rigging by a factor of five** in arena settings. It allows for a line array cluster up to 4000 lbs (1818 kg) to be suspended by two parallel chain hoist points in any orientation, and then precisely rotated horizontally into position.

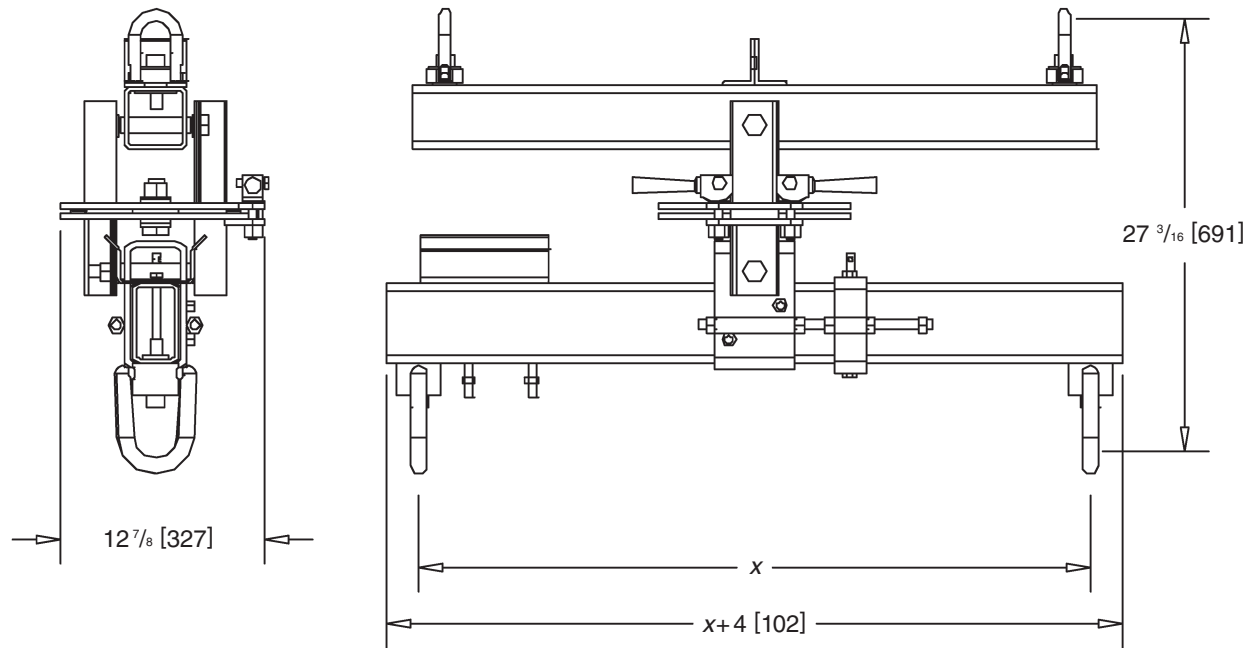
Aiming of line arrays by trial and error of rigging point placement is not necessary. It will typically be suspended by two 1 ton chain hoists. It also allows for suspension of the full Working Load Limit\* (WLL) by a center pick on the top of the unit.

A patent pending linear adjustment system on the lower load beam allows for tilt to be rapidly adjusted (not while loaded) infinitely within its +/- 20° vertical adjustment range.



These units are intended to roll into an arena, two per matching cart. The Rocker Zbeams are then flown directly off of their cart, and landed back into their cart at the end of load out. Normal usage requires no manual lifting of the units.

*\* Never exceed Working Load Limits*



The upper third of this product has a rocker beam, which keeps the center axle vertical at all times, even if the two supporting hoists are not running at the same speed. The center of the unit has a large main axle and friction bearing.

A manually engaged disc brake is used to hold the pan (horizontal) angle. The pan angle can be read in two locations on the center section using two linear rotary scales with resolution of 1°. The angle indicators can be calibrated. Heavy duty alloy steel swivel hoist rings are used for the two primary top pickups and the two lower beam load supports. A guide element is used to bring the top and bottom tubes together when first lifting a line array upright off of the arena floor.

Working Load Limit (WLL):	4000 lbs (1818 kg)
Design factor:	10:1
Structural material:	steel
Vertical angular range:	+/- 20°
Horizontal angular range:	360°
Weight: (depending on model)	~160 lbs.
Shipping weight:	TBD
Finish:	black powder coat

Transport is recommended using a matching cart system.