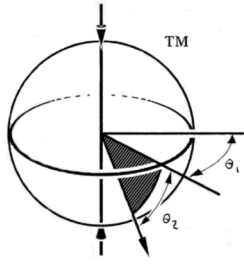
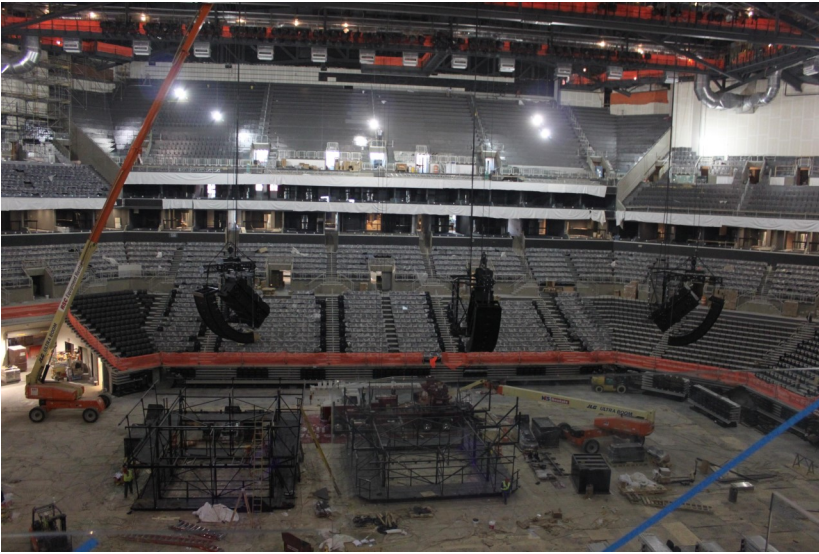


Polar[®] Focus



Project Profile

Barclays Center—Brooklyn, NY



Polar Focus collaborated with Dave Potts of Parsons Electric on this project. There were six line array clusters with 10 EAW KF740 and 4 EAW SBS1001, each totaling 2385 lbs per cluster.

Polar Focus manufactured and assembled these clusters at our shop in Massachusetts, including building custom line array carts for easy transport. These clusters were shipped to the venue in their carts, allowing Parsons Electric to fly the clusters without needing assembly on the construction floor.

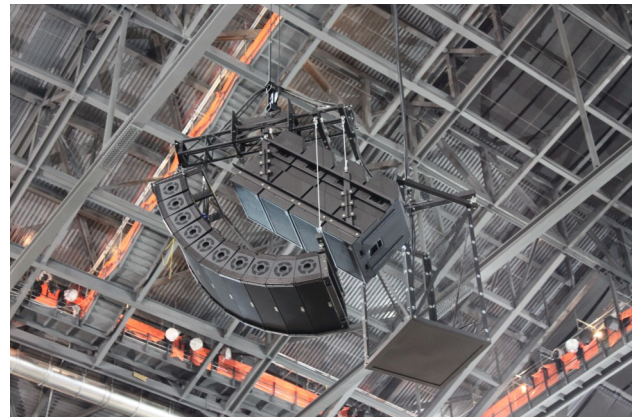
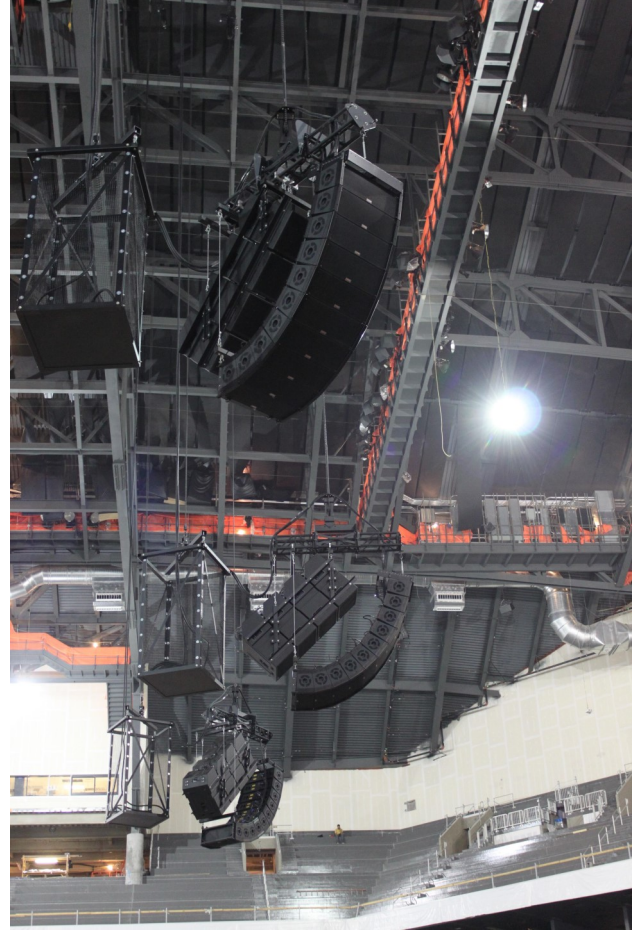
Motor Zbeam was used in this installation, allowing a single electric chain hoist to support a line array with subwoofers, with full control over pan and tilt. The Motor Zbeam system has a 2:1 mechanical advantage using a 10 inch diameter chain-pulley. Thus a one-ton chain hoist can be used for two tons of loudspeaker load. The pan angle of the speaker load is supported by a Zbeam axle for easy aiming.

Installer: Parsons Electric

6 clusters, each with:
10 EAW KF740
4 EAW SBS1001

Total Cluster Weight: 2385 lbs.

Products used: Polar Focus Motor Zbeam



[Click here](#) for a video showing the assembly of the Barclays Center line arrays.

[Click here](#) for a video showing the line array carts.