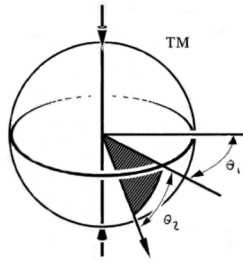


Polar[®] Focus



Ultimate Line Array Rigging

IV6-GP-AF

Glidepoint frame for Community IV6 Speakers

Designed for an improved range of functionality and ease of installation, the IV6-GP-AF is the array frame for the Community Professional Loudspeakers IV6 loudspeaker array modules.

The Glidepoint frame fastens to the loudspeakers using the integrated side plate rigging hardware included with the IV6 module. The mate points are made with high strength steel to facilitate a safe load point with an improved service life.

The Glidepoint frame features infinitely adjustable tilt control while under load without requiring re-rigging the cluster, or using chain hoists.

When attached to Polar Focus accessories and hardware, pan angle of the Glidepoint can also be adjusted in seconds without re-rigging anything.

This frame allows the precision aiming functionality that designers and installation technicians require. It also provides rapid installation to reduce labor costs.

Polar Focus Glidepoint frame is available exclusively through Community Professional Loudspeakers sales channels. Accessories for the Glidepoint frame are purchased directly through Polar Focus.

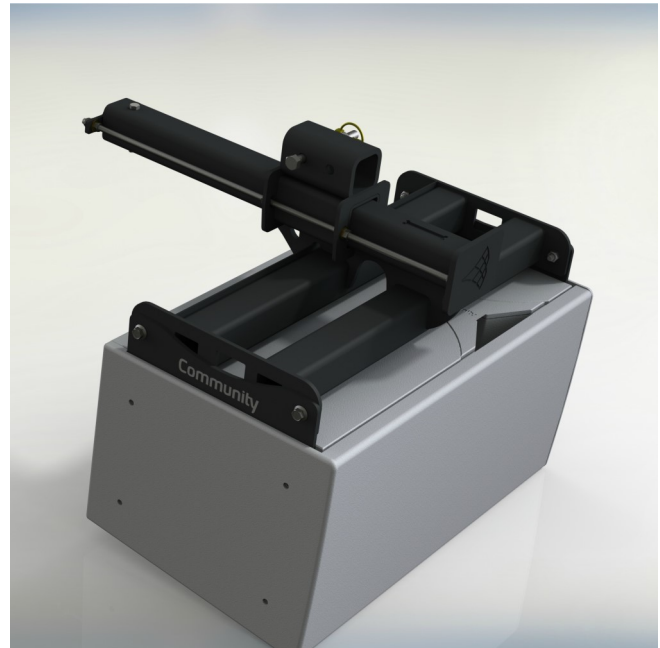
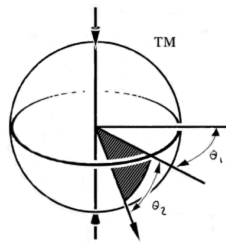


Figure 1. Polar Focus Glidepoint frame for Community IV6 modular vertical array speakers.

Polar[®] Focus



Ultimate Line Array Rigging

Architectural Specification:

The loudspeaker rigging frame shall be welded structural steel, with a black or white powder coat finish. The loudspeaker rigging frame shall affix to the available attachment points on the Community Professional Loudspeakers IV6 vertical array module. The frame shall allow for infinitely adjustable control of the tilt angle of the cluster. The loudspeaker rigging frame shall allow for quick connection to a family of pan control and roof attachment parts.

The loudspeaker frame shall be the IV6-GP-AF.

Overall Length: 28" (723mm)

Overall Height: 13" (324mm)

Overall Width: 28" (712 mm)

Weight: 76 lbs. (34.5 kg)

Primary Material: Structural Steel

Finish: Powder Coat Black / White

Working Load Limit: 1300 lbs. (589.7 kg)

