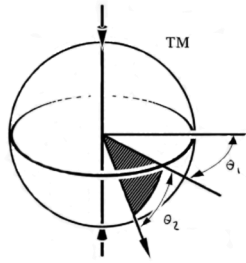


# Polar<sup>®</sup> Focus



Ultimate Line Array Rigging

## **IV6-ZB-DHB** **Dead Hang Bracket for** **Community IV6**

The IV6-ZB-DHB (Dead Hang Bracket) is designed to be used in conjunction with the Community IV6-LAF-PPB in its lite array frame orientation.

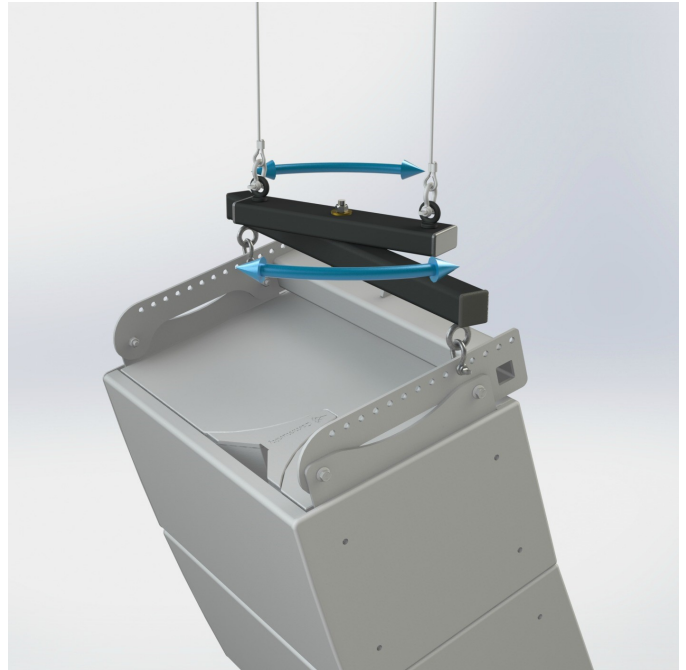
The IV6-ZB-DHB has a two-point Z-beam attachment that can be hung using our fixed cable kits.

The Z-beam allows for 360-degree pan adjustability. Some tilt can be achieved by using the attachment holes located on the top of the frame, but for more accurate tilt adjustability please see our IV6-ZB-TCK.

Polar Focus offers a full line of audio rigging equipment for professional loudspeakers and line arrays.

Need help rigging, mounting or aiming your loudspeakers or line arrays?

We can help! Call us at (413) 586-4444.

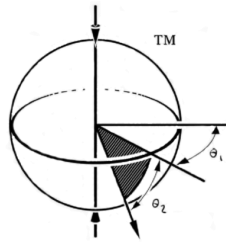


*Figure 1. IV6-ZB-DHB*



*Figure 2. IV6-ZB-DHB*

# Polar<sup>®</sup> Focus



Ultimate Line Array Rigging

Overall Length: 29.5" (749.3mm)  
Overall Height: 7" (177.8mm)  
Overall Width: 3" (76.2 mm)  
Weight:: 18 lbs. (8.17 kg)  
Primary Material: Structural Steel  
Finish: Powder Coat Black / White  
WLL: 420 lbs. (190.5 kg)

