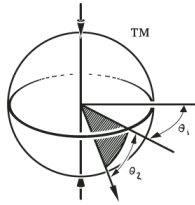


---

# Polar<sup>®</sup> Focus



Audio Rigging Products

---

## OBO-RM-EXTSPR

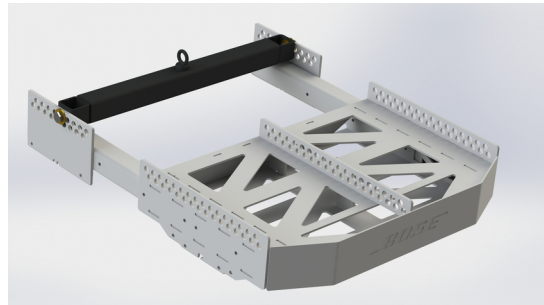
### Center Pick Point for Bose<sup>®</sup> RoomMatch<sup>®</sup> RMXLNG and RMXSRT

Designed to be used with the Bose<sup>®</sup> RMXLNG and RMXSRT extender bars, the OBO-RM-EXTSPR allows for a center pick point between the extender bars.

The OBO-RM-EXTSPR fastens to the top pick holes of the RMXLNG or RMXSRT, allowing for 9 discrete central pick positions. Included 3/4" Grade 5 hardware is used to attach the OBO-RM-EXTSPR to the extender bars.

The entire spreader has the ability to tilt about its axis such that the center eye is always in the plane of lift; providing a safe lifting point over a range of pick up angles.

When attached to supporting XY Grid<sup>®</sup> family hardware, tilt and pan angle of the system can be adjusted in seconds without re-rigging anything.



*Figure 1. OBO-RM-EXTSPR shown attached to Bose<sup>®</sup> RMXSRT and RMAFLG.*



*Figure 2. OBO-RM-EXTSPR*

See [www.linearrayframes.com](http://www.linearrayframes.com) for pan control, roof attachment, OEM products, line array frames and manufacturer-specific rigging.

---

Polar Focus, Inc. • 20 Industrial Drive E., Unit 2 • South Deerfield, MA 01373 USA • 413-586-4444

[www.polarfocus.com](http://www.polarfocus.com) • Specifications subject to change. • Copyright© 2016

Polar Focus<sup>®</sup>, Zbeam<sup>®</sup> and XY Grid<sup>®</sup> are registered trademarks of Polar Focus, Inc.

Bose<sup>®</sup> and RoomMatch<sup>®</sup> are registered trademarks of Bose Corporation



### Architectural Specification:

The loudspeaker rigging frame spreader shall be welded structural steel, with a black powder coated finish. Supplied hardware shall be 3/4" Grade 5.

The loudspeaker rigging frame spreader shall affix to the available attachment points on the Bose® RMXLNG and RMXSRT. The loudspeaker rigging frame spreader shall provide a central pick up point between extension bars. The loudspeaker rigging frame spreader shall allow for quick connection to a family of pan control and roof attachment parts.

The line array frame spreader shall be the OBO-RM-EXTSPR.

Overall Length:	37.2" (945mm)
Overall Height:	5.6" (142mm)
Overall Width:	3" (76mm)
Weight:	29 lbs (13.2 kg)
Primary Material:	Structural Steel
Finish:	Powder Coat Black
WLL @ 10:1:	1100 lbs. (499 kg)

