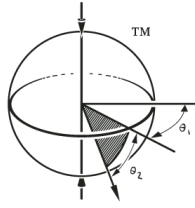


# Polar<sup>®</sup> Focus



Audio Rigging Products

---

## PY1-BTP1212-1550 Box Truss Plate

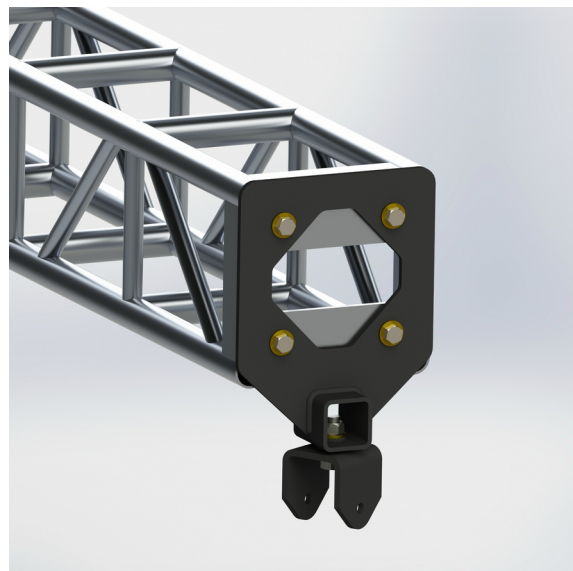
The PY1 Box Truss Plate is a component designed to allow for clean and fast attachment of a line array to the end plate of a 12" x 12" truss, or the joint between two 12" x 12" trusses.

The bolt hole pattern will fit the most common bolt hole patterns of 12" x 12" trusses in the marketplace. The use of this component eliminates the need for slings and integrates a pan control feature with infinite adjustability. This product may be used at the end of a truss or bolted between two adjoining truss components.

The PY1 Component allows for interface to a stock Polar Focus aftermarket line array frame, or the versatile SFA-16-1100 Spine Frame Adapter that will provide tilt control for any standard line array frame.



*Figure 1. PY1-BTP1212-1550*



*Figure 2. PY1-BTP1212-1550 - shown with box truss*

---

See [www.linearrayframes.com](http://www.linearrayframes.com) for pan control, roof attachment, OEM products, line array frames and manufacturer-specific rigging.

---

Polar Focus, Inc. • 20 Industrial Drive E., Unit 2 • South Deerfield, MA 01373 USA • 413-586-4444

[www.polarfocus.com](http://www.polarfocus.com) • Specifications subject to change. • Copyright© 2016

Polar Focus®, Zbeam® and XY Grid® are registered trademarks of Polar Focus, Inc.



### Architectural Specification:

The rigging suspension and aiming device shall affix to industry standard 12" x 12" box truss.

The rigging suspension and aiming device shall be welded structural steel, with a black powder coated finish. The rigging suspension and aiming device shall allow for infinite pan control of rigged components under full load.

The rigging suspension and aiming device shall be the Polar Focus PY1-BTP1212-1550.

- Overall Length: 5.4" (137.2mm)
- Overall Height: 20.1" (510.5mm)
- Overall Width: 12" (304.8mm)
- Weight: 19.6 lbs (18.9 kg)
- Primary Material: Structural Steel
- Finish: Powder Coat Black
- WLL @ 10:1: 1550 lbs (703 kg)

