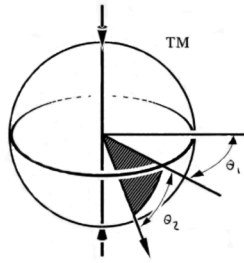


# Polar<sup>®</sup> Focus



Ultimate Line Array Rigging

**OJB-CBT-1K-B**

**OJB-CBT-1K-W**

**Yoke for JBL CBT1000 / CBT1000E**

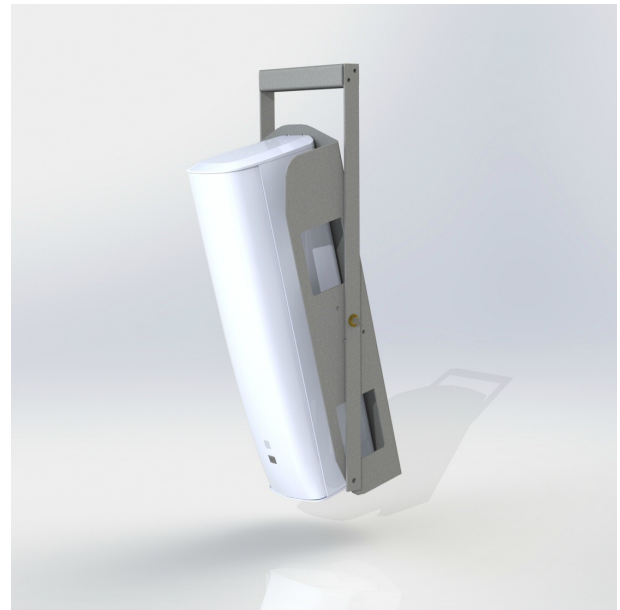
The OJB-CBT-1K is a versatile yoked bracket allowing for infinite pan and tilt control.

This bracket is designed for the JBL CBT1000-1000E family. The yoke adapter which allows a single speaker or double speaker to be attached has access ports on the back and sides to allow for complete access in the one or two speaker mounting variations.

The yoke and yoke adapter are specifically designed for the JBL CBT1000 series with our standard 10:1 safety design factor.

Product shown is for indoor use only. Weather rated version is available upon request.

For further assistance, call our Audio Rigging Consultants at (413) 586-4444.

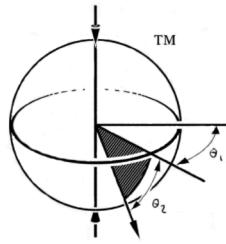


*Figure 1. OJB-CBT-1K with a single speaker.*



*Figure 2. OJB-CBT-1K shown with two speakers.*

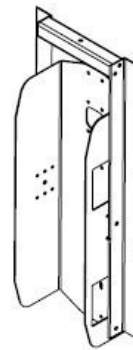
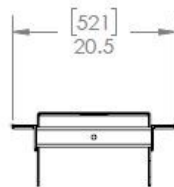
# Polar<sup>®</sup> Focus



## Ultimate Line Array Rigging

Architectural Specification:

Overall Length: 50" (1262mm)  
Overall Height: 9" (231mm)  
Overall Width: 13" (341 mm)  
Weight:: 82 lbs. (37 kg)  
Primary Material: Structural Steel  
Finish: Powder Coat Black/White  
WLL: 1 or 2 CBT1000 Speakers



CBT1000

CBT1000 + 1000E

